

## Genetic Diversity among *Escherichia coli* Isolates Carrying *f18* Genes from Pigs with Porcine Postweaning Diarrhea and Edema Disease

BÉLA NAGY,<sup>1</sup> RICHARD A. WILSON,<sup>2</sup> AND THOMAS S. WHITTAM<sup>3\*</sup>

*Veterinary Medical Research Institute of the Hungarian Academy of Sciences, Budapest, Hungary,<sup>1</sup>  
and E. coli Reference Center<sup>2</sup> and Department of Biology,<sup>3</sup> Pennsylvania State University,  
University Park, Pennsylvania 16802*

Received 15 June 1998/Returned for modification 18 August 1998/Accepted 11 December 1998

**Multilocus enzyme electrophoresis was applied to detect allelic variation and multilocus genotypes (electrophoretic types [ETs]) among 43 *Escherichia coli* isolates from weaned pigs suffering from edema disease or from diarrhea. ETs were analyzed in relation to O serogroups and virulence genes (*sta*, *stb*, *lt*, *stx*<sub>2</sub>, and *f18*) by DNA hybridization. Genomic diversity was the lowest in serogroup O138, while virulence genes (*stx*<sub>2</sub> and *f18*) were the most uniform in serogroup O139. In general, the serogroups or toxin and F18 fimbria types were not related to selected ETs, suggesting that the toxin and *f18* fimbria genes in *E. coli* isolates from pigs with postweaning diarrhea or edema disease occur in a variety of chromosomal backgrounds.**

Major factors influencing bacterial pathogenicity are the families of attachment factors (comprised of fimbriae) and toxins often encoded on plasmid DNA, thereby moving horizontally among the population of *Escherichia coli*. It has been clearly demonstrated that the adherence factors and toxins of enterotoxigenic *E. coli* that infect farm animals, namely, calves and pigs, occur in isolates from a limited number of serotypes (13, 15, 16, 25, 29), suggesting host specificity of adhesin-receptor interactions and genetic links between determinants of O types and adhesin and toxin types. It has been shown that porcine postweaning diarrhea (PWD) strains often carry enterotoxin genes and express F4 (and occasionally also F5, F6, or F41) fimbriae (29), whereas edema disease (ED) isolates tend to be F4, F5, F6, and F41 negative and strains often produce Shiga-like toxin 2v (2, 9, 14), detectable on Vero cells, also called verotoxigenic *E. coli*. The application of multilocus enzyme electrophoresis (MLEE) to the study of *E. coli* populations has demonstrated that the O serogroups associated with infectious diseases occur in a variety of chromosomal backgrounds (21).

The purpose of the present study was to assess the diversity of chromosomal backgrounds and to characterize the distribution of virulence factors of PWD and ED strains of *E. coli* lacking the fimbriae described above. To this end, we characterized a variety of porcine PWD and ED strains by MLEE, DNA probe assays, and serological tests. In addition to testing for toxigenicity, attention was directed to the newly described fimbriae F18ab (F107) and F18ac (2134P and 8813), adhesins recently associated with ED and PWD isolates as described by Bertschinger et al. (3), Casey et al. (4), Nagy et al. (18), and Salajka et al. (23) respectively, and proven to be variants of F18 fimbriae (10, 19, 22).

A total of 43 *E. coli* isolates were obtained from the small-intestinal contents or the feces of weaned pigs suffering from PWD or ED and were selected on the basis of producing no K88 (F4), K99 (F5), 987P (F6), or F41 fimbriae. Strains with

four-digit number designations (except strain 2228) were isolated in Hungary and were partially characterized earlier (17), whereas strains with six-digit number designations were isolated in the United States and represent a subset of strains from an earlier study (30). Each strain was isolated from a different pig except for strains 2155 and 2156. Strain 2228 is a Swiss isolate, kindly provided by A. O'Brien (Bethesda, Md.). The strains were serotyped by standard methods at the Statens Seruminstitut, Copenhagen, Denmark, or at the *E. coli* Reference Center, Pennsylvania State University, University Park, Pa. The presence of F18ac fimbriae was analyzed by fluorescent microscopy (18) using monoclonal antibodies as described previously (5) for testing bacteria grown on Iso-Sensitest agar (Oxoid, Basingstoke, United Kingdom) with alizarin yellow (Fluka AG, Buchs, Switzerland) added, in a 5% CO<sub>2</sub> atmosphere as described by Wittig et al. (31). Enterotoxin genes *sta*, *stb*, and *lt* as well as Shiga-like toxin (*stx*<sub>2</sub>) and fimbrial (*f18*) genes were detected by colony hybridizations performed according to the method of Grunstein and Hogness (6). The *stb* probe was prepared from the recombinant plasmid pRAS-1, the *sta* probe was prepared from the recombinant plasmid pSTP6, and the *lt* probe was prepared from the recombinant plasmid pWD299. The *f18* probe that detects both F18ab and F18ac (8, 10, 22) was obtained from strain 4748, and the *stx*<sub>2</sub> probe that detects both Stx2 and Stx2v toxin genes was obtained from the recombinant plasmid pNN111-19 (20) by the method of Lee et al. (12). The probes were labeled by nick translation with [<sup>32</sup>P]dATP. MLEE was applied to detect allelic variation at 20 enzyme loci by the methods described by Whittam et al. (28). Strains were characterized by their multilocus array of alleles and classified into distinct electrophoretic types (ETs). The genetic relationships among isolates were assessed by groupings inferred from cluster analysis (24, 28).

The 43 strains were allotted to serogroups O157, O147, O141, O139, O138, O109, O21, O5, and OX. The association of the serogroups with the virulence genes *sta*, *stb*, *lt*, *stx*<sub>2</sub> and *f18* and the ETs is provided in Table 1. The *f18* fimbria gene was detected in all major serogroups. Although most serogroups represented closely related ETs (Fig. 1), not all mem-

\* Corresponding author. Mailing address: Institute of Molecular Evolutionary Genetics, Pennsylvania State University, University Park, PA 16802. Phone: (814) 863-1970. Fax: (814) 865-9131. E-mail: tsw1@psu.edu.

TABLE 1. Characteristics of *E. coli* isolates from pigs with PWD and ED

| Strain | Serogroup <sup>a</sup> | Characteristic <sup>d</sup> |                         |                        |                                      |                    |                         | ET |
|--------|------------------------|-----------------------------|-------------------------|------------------------|--------------------------------------|--------------------|-------------------------|----|
|        |                        | <i>sta</i> <sup>b</sup>     | <i>stb</i> <sup>b</sup> | <i>lt</i> <sup>b</sup> | <i>stx</i> <sub>2</sub> <sup>b</sup> | F18ac <sup>c</sup> | <i>f18</i> <sup>b</sup> |    |
| 2134P  | O157                   | +                           | +                       | -                      | -                                    | +                  | +                       | 11 |
| 2152   | O157                   | +                           | +                       | -                      | -                                    | +                  | +                       | 11 |
| 2188   | O157                   | +                           | +                       | -                      | -                                    | +                  | +                       | 11 |
| 802575 | O157                   | +                           | -                       | +                      | -                                    | -                  | -                       | 18 |
| 2211   | O147                   | +                           | +                       | -                      | +                                    | +                  | +                       | 1  |
| 2144   | O147                   | +                           | +                       | -                      | +                                    | +                  | +                       | 1  |
| 2173   | O147                   | +                           | +                       | -                      | -                                    | +                  | +                       | 4  |
| 2157   | O147                   | +                           | +                       | -                      | -                                    | +                  | +                       | 16 |
| 2185   | O141                   | +                           | +                       | -                      | +/-                                  | +                  | +                       | 17 |
| 2172   | O141                   | +                           | +                       | -                      | -                                    | +                  | +                       | 17 |
| 2171   | O141                   | +                           | +                       | -                      | -                                    | +                  | +                       | 11 |
| 2155   | O141                   | -                           | +                       | +                      | -                                    | -                  | +                       | 17 |
| 2180   | O141                   | +                           | +                       | -                      | -                                    | +                  | +                       | 1  |
| 2181   | O141                   | +                           | +                       | -                      | -                                    | +                  | +                       | 3  |
| 2183   | O141                   | -                           | -                       | -                      | +                                    | -                  | +                       | 17 |
| 820727 | O141                   | +                           | -                       | -                      | -                                    | -                  | -                       | 13 |
| 2156   | O141                   | +                           | +                       | -                      | -                                    | +                  | +                       | 17 |
| 2142   | O139                   | -                           | -                       | -                      | +                                    | -                  | +                       | 5  |
| 2200   | O139                   | -                           | -                       | -                      | +                                    | -                  | +                       | 8  |
| 2162   | O139                   | -                           | -                       | -                      | +                                    | -                  | +                       | 5  |
| 2141   | O139                   | -                           | -                       | -                      | +                                    | -                  | +                       | 6  |
| 2206   | O139                   | -                           | -                       | -                      | +                                    | -                  | +                       | 7  |
| 2228   | O139                   | -                           | -                       | -                      | +                                    | -                  | +                       | 6  |
| 750158 | O139                   | -                           | -                       | -                      | -                                    | -                  | -                       | 12 |
| 881284 | O139                   | -                           | -                       | -                      | +                                    | -                  | +                       | 9  |
| 911456 | O139                   | -                           | -                       | -                      | +                                    | -                  | +                       | 10 |
| 2203   | O138                   | +                           | +                       | -                      | +                                    | +                  | +                       | 1  |
| 750162 | O138                   | +                           | +                       | -                      | -                                    | -                  | +                       | 2  |
| 750324 | O138                   | +                           | +                       | -                      | +                                    | -                  | +                       | 2  |
| 750408 | O138                   | +                           | +                       | -                      | +                                    | -                  | +                       | 2  |
| 750421 | O138                   | -                           | +                       | -                      | +                                    | -                  | -                       | 2  |
| 760385 | O138                   | -                           | -                       | -                      | -                                    | -                  | +                       | 2  |
| 760386 | O138                   | -                           | +                       | -                      | +                                    | -                  | -                       | 2  |
| 831086 | O138                   | -                           | -                       | -                      | -                                    | -                  | -                       | 14 |
| 890652 | O138                   | +                           | +                       | -                      | +                                    | +                  | +                       | 2  |
| 2189   | O109                   | +                           | +                       | -                      | -                                    | -                  | -                       | 17 |
| 2159   | O21                    | -                           | +                       | -                      | -                                    | +                  | +                       | 1  |
| 2168   | O5                     | -                           | -                       | -                      | +                                    | -                  | -                       | 15 |
| 2170   | OX <sup>e</sup>        | +                           | +                       | +                      | -                                    | -                  | +                       | 1  |
| 2192   | OX                     | +                           | +                       | -                      | -                                    | +                  | +                       | 1  |
| 2193   | OX                     | +                           | +                       | -                      | -                                    | +                  | +                       | 1  |
| 2209   | OX                     | +                           | +                       | -                      | -                                    | -                  | +                       | 17 |
| 2207   | OX                     | +                           | +                       | -                      | -                                    | +                  | +                       | 17 |

<sup>a</sup> All except two of the O139 Hungarian strains were from pigs with ED.

<sup>b</sup> Detected by use of a gene probe.

<sup>c</sup> Detected by use of a monoclonal antibody.

<sup>d</sup> +, present; -, absent; +/-, equivocal result.

<sup>e</sup> OX, not typeable with standard O antisera.

bers of a serogroup shared the same virulence genes nor did they express the same surface fimbriae.

Among the four serogroup O157 strains evaluated, three had identical phenotypes, e.g., each carried *sta* and *stb* enterotoxin and *f18* genes, while the other strain 802575, was positive for *sta* and *lt* genes and lacked the *f18* gene (Table 1). Interestingly, strain 802575 belongs to clone ET18, which is not related (genetic distance, *D* = 0.580) to the ET that defines the other three O157 isolates namely ET11 (Fig. 1). The nine O141 isolates displayed similar toxin and fimbria patterns. Seven

strains carried *sta* or *stb*, all except one carried *f18*, and one strain (strain 2155) was positive for *lt* and *stb* genes. However, this serogroup (O141) was associated with five distinct clones, ET1, ET3, ET11, ET13, and ET17, which were represented in three clusters, A, C, and D (Fig. 1). Eight of nine O139 strains reacted with the *f18* gene probe, whereas none expressed the F18ac fimbria. Only one strain failed to react with the *stx*<sub>2</sub> probe, and none were positive for enterotoxin genes. In contrast to O141, the O139 strains represented by ET5, ET6, ET7, ET8, ET9, and ET10 formed a tight cluster related at a *D* of 0.1, except for strain 750158 (ET12), which is related at a *D* of 0.45 (Fig. 1). Six of nine O138 strains were positive for the *f18* gene. Six of nine, five of nine, and seven of nine isolates reacted with *stx*<sub>2</sub>, *sta*, and *stb* gene probes, respectively. With the exception of one isolate, strain 831086, the serogroup O138 strains comprised a tight cluster, cluster A, containing ET1 and ET2 that are related at a *D* of 0.05. Importantly, strain 831086 was negative for all virulence factors tested in reference to cluster A strains that carry *sta*, *stb*, *stx*<sub>2</sub>, and *f18* genes (Fig. 1 and Table 1). Serogroups infrequently associated with PWD, namely, O109, O21, and O5, and serogroup OX were represented by three clonal types, ET1, ET15, and ET17. These clonal types were represented among the serogroups most commonly associated with ED and PWD. The majority of this group of isolates was positive for the heat-stable toxin genes; only one strain carried the heat-labile toxin gene, and six of eight were positive for the *f18* gene (Fig. 1).

Enteric disease in the neonatal and preweaned pig is often associated with *E. coli* strains that express STa, STb, LT toxins, and K88 (F4), K99 (F5), 987P (F6), or F41 fimbria virulence factors. Recently, the identified adhesins F107 (F18ab) and 2134P (F18ac), as well as a Shiga toxin variant (Stx2v), have been associated with isolates from pigs with ED and PWD (2, 5, 8, 9, 11, 17, 18). The two adhesin factors F18ab and F18ac have been found most frequently associated with serogroups O138, O139, O141, O147, and O157 (19, 22).

Through the application of MLEE to the study of *E. coli* population genetics, Ochman et al. (21) have shown that animal *E. coli* strains of the same serotype can be represented in diverse genetic backgrounds. On the other hand, Whittam et al. (27) provided strong genetic evidence that *E. coli* O157:H7, the causative agent of hemorrhagic colitis and hemolytic uremic syndrome belongs to a pathogenic clone that occurs throughout North America. Furthermore, we have previously shown that the O157:H7 isolates are related at the serogroup level to the O157 serogroup of pigs but they are not closely related genetically (26).

The genetic diversity of *E. coli* strains isolated from pigs with PWD (overwhelmingly enterotoxigenic and 39% F4<sup>+</sup>) in Australia has been recently reported by Hampson et al. (7). Using MLEE, they found 57 different ETs among 79 isolates of serogroups O8, O138, O141, O149, and O157. Cluster analysis resulted in 14 subclusters at a *D* of 0.2 that showed that only a few isolates in the four main serogroups were closely related. It was surprising that the diversity of serogroup O138 was very high for these Australian isolates (7). Their data suggested that strains causing PWD represent a variety of *E. coli* strains that may carry virulence factors associated with disease of older pigs. However, they did not test for virulence factors other than K88 (F4).

In our study focusing on F18<sup>+</sup> *E. coli* and virulence genes, we found 18 distinct ETs among the 43 isolates based upon genetic variation at 20 enzyme loci. There was a strong genetic homogeneity in serogroups O157 and O138, whereas the other serogroups evaluated were comprised of diverse ETs, with a *D* of >0.2 between them.

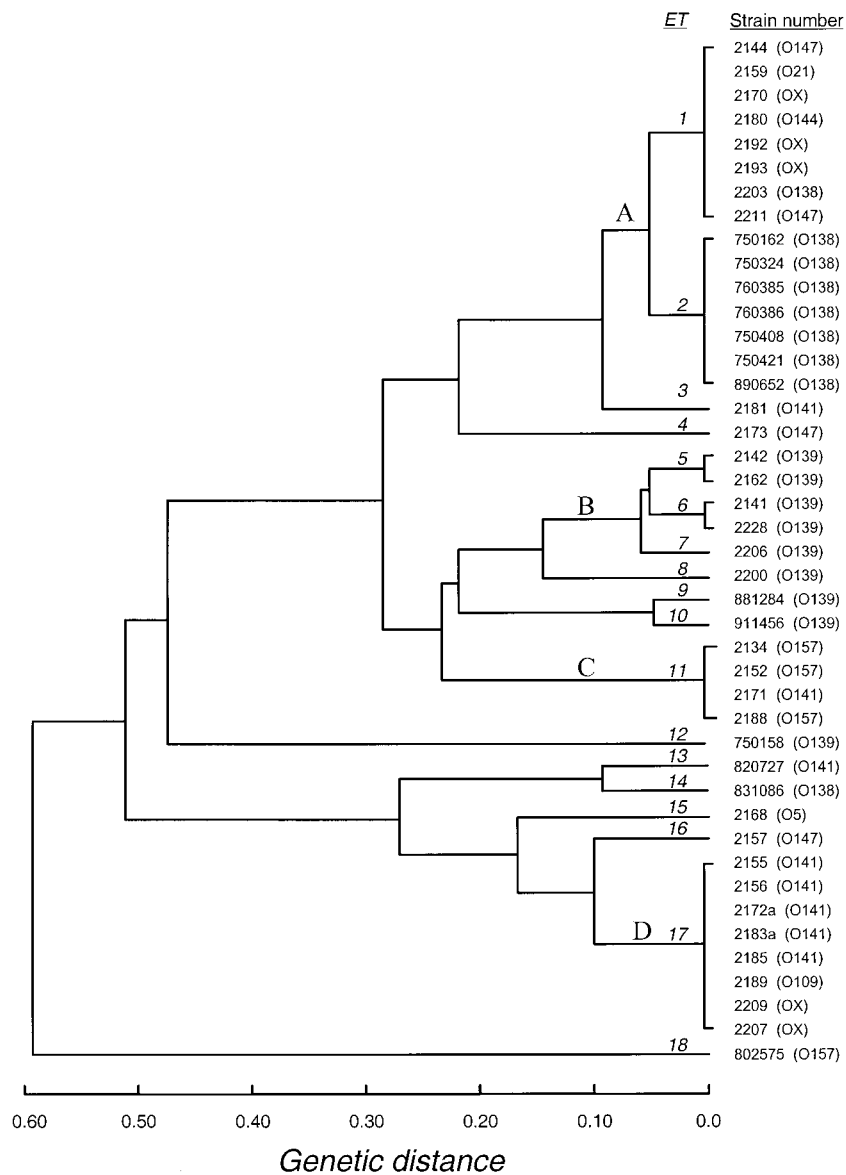


FIG. 1. Genetic relationships of 43 ETs of porcine strains isolated from pigs with PWD or ED. The dendrogram was generated by average-linkage cluster analysis, using genetic distance matrix based on the numbers of allelic mismatches between ETs.

Aarestrup et al. (1) used ribotyping and pulsed-field gel electrophoresis profiling to show how ED strains (O139, F18, and Stx2e) from different countries were related. Based on pulsed-field gel electrophoresis profiles, the Danish isolates were closely related and different from isolates from other countries (Switzerland, Hungary, Iceland, Norway, and Sweden), suggesting an association of Danish strains with the movement of animals between breeding and finishing facilities. In our study, most of the O139 strains from Hungary and the United States formed a relatively tight cluster (including seven clones), and had the most uniform virulence genes (*f18* and *stx*<sub>2</sub>), consistent with the findings of the Danish study (1). Several of our ED and PWD strains were recently investigated for F18 and Stx phenotypes and showed patterns similar to the phenotypes of the Danish strains (19).

Bertschinger et al. (3) have shown that inheritance of susceptibility to intestinal colonization with F107 (F18ab) fim-

briae appears to be a single recessive trait. It has also been shown that F18ab and F18ac most likely share the same receptors (19, 22). Pathogenic *E. coli* with these fimbriae would more likely be isolated from a select group of pigs and, theoretically, could represent a genetically more homogeneous group of strains. However, our data indicate the existence of a diverse population of *f18*<sup>+</sup> *E. coli* isolates with similar serotypes associated with PWD and ED. In our study, only eight of the strains were neither phenotype F18ac positive nor *f18* gene positive.

The strains selected for the present study represent a subset of strains from our earlier study (30). In the previous study, we tested 325 *E. coli* strains selected from the Reference Center that had been isolated from pigs diagnosed with PWD or ED in the United States and in Hungary by using MLEE as in the present study. We have shown that the serotypes associated with diarrhea (PWD) have very diverse genetic backgrounds

even though the serotypes appear to be limited and that among the four major serogroups the fimbriae and toxins in general are not related to selected genotypes. Our earlier observations (30) concur with the data reported here, that the toxin and *fl8* fimbria genes of PWD strains occur in a variety of genetic backgrounds and suggest that such strains have converged by selection or recombination to these major phenotypes. In contrast, *fl8*<sup>+</sup> ED strains seem to be characterized by somewhat more genetic homogeneity.

This work was supported by the Hungarian Basic Science Fund OTKA T4758 and A312.

We are indebted to Michael Davis for serotyping, Kimberly Seebart for gene probe testing, Marie Wolfe for MLEE analysis, and Martha Tóth-Székrenyi for skilled technical assistance.

#### REFERENCES

- Aarestrup, F. M., S. E. Jorsal, P. Ahrens, N. E. Jensen, and A. Meyling. 1997. Molecular characterization of *Escherichia coli* strains isolated from pigs with edema disease. *J. Clin. Microbiol.* **35**:20–24.
- Bertschinger, H. U., M. Bachman, C. Mettler, A. Pospischil, E. M. Schraner, M. Stamm, T. Sydler, and P. Wild. 1990. Adhesive fimbriae produced in vitro by *Escherichia coli* O139:K12(B):H1 associated with enterotoxemia in pigs. *Vet. Microbiol.* **25**:267–281.
- Bertschinger, H. U., M. Stamm, and P. Vogeli. 1993. Inheritance of resistance to oedema disease in the pig: experiments with an *Escherichia coli* expressing fimbriae 17. *Vet. Microbiol.* **35**:79–89.
- Casey, T. A., B. Nagy, and H. W. Moon. 1992. Pathogenicity of porcine enterotoxigenic *Escherichia coli* that do not express K88, K99, F41 or p987P adhesins. *Am. J. Vet. Res.* **53**:1488–1492.
- Dean-Nystrom, E. A., T. A. Casey, R. A. Schneider, and B. Nagy. 1993. A monoclonal antibody identifies 2134P fimbriae as adhesins on enterotoxigenic *Escherichia coli* isolated from postweaning pigs. *Vet. Microbiol.* **37**:101–114.
- Grunstein, M., and D. S. Hogness. 1975. Colony hybridization: a method for the isolation of cloned DNAs that contain a specific gene. *Proc. Natl. Acad. Sci. USA* **72**:3961–3965.
- Hampson, D. J., J. M. Woodward, and I. D. Connaughton. 1993. Genetic analysis of porcine postweaning diarrhea. *Epidemiol. Infect.* **110**:575–581.
- Imberechts, H., H. DeGreve, C. Schlicker, H. Bouchet, P. Pohl, G. Charlier, H. U. Bertschinger, P. Wild, J. Vandekerckhove, J. Van Damme, M. Van Montagu, and P. Lintermans. 1992. Characterization of F107 fimbriae of *Escherichia coli* 107/86, which causes edema disease in pigs, and nucleotide sequence of the F107 major fimbrial subunit gene, *fedA*. *Infect. Immun.* **60**:1963–1971.
- Imberechts, H., H. U. Bertschinger, M. Stamm, T. Sydler, P. Pohl, H. DeGreve, J.-P. Hernalsteen, M. Van Montagu, and P. Lintermans. 1994. Prevalence of F107 fimbriae on *Escherichia coli* isolated from pigs with oedema disease or postweaning diarrhoea. *Vet. Microbiol.* **40**:219–230.
- Imberechts, H., N. Van Pelt, H. DeGreve, and P. Lintermans. 1994. Sequences related to the major subunit gene *fedA* of F107 fimbriae in porcine *Escherichia coli* strains that express adhesive fimbriae. *FEMS Microbiol. Lett.* **119**:309–314.
- Kennan, R., O. Soderlind, and P. Conway. 1995. Presence of F107, 2134P and AV24 fimbriae on strains of *Escherichia coli* isolated from Swedish piglets with diarrhoea. *Vet. Microbiol.* **43**:123–129.
- Lee, C. H., S. L. Moseley, H. W. Moon, S. C. Whipp, C. L. Gyles, and M. So. 1983. Characterization of the gene encoding heat-stable toxin II and preliminary molecular epidemiological studies of enterotoxigenic *Escherichia coli* heat-stable toxin II producers. *Infect. Immun.* **42**:264–268.
- Lund, A. 1982. Serological, enterotoxin producing and biochemical properties of *E. coli* isolated from piglets with neonatal diarrhea in Norway. *Acta Vet. Scand.* **23**:29–87.
- Marques, L. R. M., J. S. M. Peiris, S. J. Cryz, and A. D. O'Brien. 1987. *Escherichia coli* isolated from pigs with edema disease produce a variant of Shiga-like toxin II. *FEMS Lett.* **44**:33–38.
- Moon, H. W., E. M. Kohler, R. A. Schneider, and S. C. Whipp. 1980. Prevalence of pilus antigens, enterotoxin types, and enteropathogenicity among K88-negative enterotoxigenic *Escherichia coli* from neonatal pigs. *Infect. Immun.* **27**:222–230.
- Morris, J. A., C. J. Thorns, C. Boarer, and R. A. Wilson. 1985. Evaluation of a monoclonal antibody to the K99 fimbrial adhesin produced by *Escherichia coli* enterotoxigenic for calves, lambs, and piglets. *Res. Vet. Sci.* **39**:75–79.
- Nagy, B., T. A. Casey, and H. W. Moon. 1990. Phenotype and genotype of *Escherichia coli* isolated from pigs with postweaning diarrhea in Hungary. *J. Clin. Microbiol.* **28**:651–653.
- Nagy, B., T. A. Casey, S. C. Whipp, and H. W. Moon. 1992. Susceptibility of porcine intestine to pilus-mediated adhesion by some isolates of pilated enterotoxigenic *Escherichia coli* increases with age. *Infect. Immun.* **60**:1285–1294.
- Nagy, B., S. C. Whipp, H. Imberechts, H. U. Bertschinger, E. A. Dean-Nystrom, T. A. Casey, and E. Salajka. 1997. Biological relationship between F18ab and F18ac fimbriae of enterotoxigenic and verocytotoxigenic *Escherichia coli* from weaned pigs with oedema disease of diarrhoea. *Microbiol. Pathol.* **22**:1–11.
- Newland, J. W., and R. J. Neill. 1988. DNA probes for Shiga-like toxins I and II and for toxin-converting bacteriophages. *J. Clin. Microbiol.* **26**:1292–1297.
- Ochman, H., R. A. Wilson, T. S. Whittam, and R. K. Selander. 1984. Genetic diversity within serotypes of *Escherichia coli*, p. 202–224. In Proceedings of the Fourth International Symposium on Neonatal Diarrhea. VIDO Publications, University of Saskatchewan, Saskatoon, Canada.
- Rippinger, P., H. U. Bertschinger, H. Imberechts, B. Nagy, I. Sorg, M. Stamm, P. Wild, and W. Wittig. 1995. Designations F18ab and F18ac for the fimbrial types F107, 2134-P and 8813 of *E. coli* isolated from porcine postweaning diarrhoea and from oedema disease. *Vet. Microbiol.* **45**:281–285.
- Salajka, E., Z. Salajkova, P. Alexa, and M. Hornich. 1992. Colonization factor different from K88, K99, F41, and 987P in enterotoxigenic *Escherichia coli* strains isolated from postweaning diarrhea in pigs. *Vet. Microbiol.* **32**:163–175.
- Selander, R., D. A. Caugant, H. Ochman, K. M. Musser, M. N. Gilmour, and T. S. Whittam. 1986. Methods of multilocus enzyme electrophoresis for bacterial population genetics and systematics. *Appl. Environ. Microbiol.* **51**:873–884.
- Soderlind, O., and R. Möllby. 1979. Enterotoxins, O-groups, and K88 antigen in *Escherichia coli* from neonatal piglets with and without diarrhea. *Infect. Immun.* **24**:611–616.
- Whittam, T. S., and R. A. Wilson. 1988. Genetic relationships among pathogenic *Escherichia coli* of serogroup O157. *Infect. Immun.* **56**:2467–2473.
- Whittam, T. S., I. K. Wachsmuth, and R. A. Wilson. 1988. Genetic evidence of clonal descent of *Escherichia coli* O157:H7 associated with hemorrhagic colitis and hemolytic uremic syndrome. *J. Infect. Dis.* **6**:1124–1133.
- Whittam, T. S., M. L. Wolfe, I. K. Wachsmuth, F. Orskov, I. Orskov, and R. A. Wilson. 1993. Clonal relationships among *Escherichia coli* strains that cause hemorrhagic colitis and infantile diarrhea. *Infect. Immun.* **61**:1619–1629.
- Wilson, R. A., and D. H. Francis. 1986. Fimbriae and enterotoxins associated with *Escherichia coli* serogroups isolated from pigs with colibacillosis. *Am. J. Vet. Res.* **47**:213–217.
- Wilson, R. A., B. Nagy, and T. S. Whittam. 1994. Clonal analysis of weaned pig isolates of enterotoxigenic and verocytotoxigenic *E. coli*, p. 199. In Proceedings of the 13th IPVS Congress, Bangkok, Thailand.
- Wittig, W., R. Prager, M. Stamm, W. Streckel, and H. Tschape. 1994. Expression and plasmid transfer of genes coding for the fimbrial antigen F107 in porcine *Escherichia coli* strains. *Zentbl. Bakteriol.* **281**:130–139.